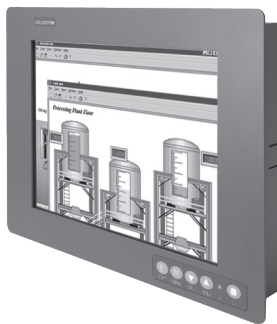


P6100

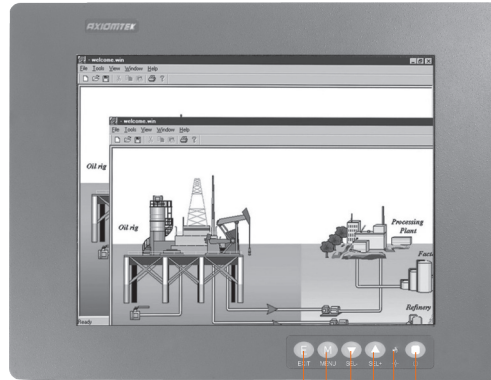
10.4" SVGA TFT Industrial LCD Monitor

Features

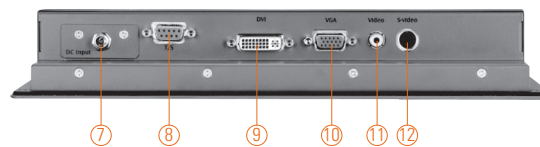
- 10.4" SVGA TFT LED backlight LCD
- NEMA 4/12 (IP65)- compliant flat panel monitor
- Resistive touchscreen
- Supports full range screw-type (locked) AC-in or 24V DC-in (option)
- Supports multi-signal inputs: VGA, S-video, Video and DVI-D
- Supports panel mount, wall mount and VESA arm



▲ Side view



1. Exit
2. Menu
3. SEL-
4. SEL+5. Power LED
6. Power switch



7. DC power input
8. T/S port
9. DVI (Only for DVI-D)
10. VGA
11. Video (CVBS)
12. S-video

Introduction

The P6100 is a slim & compact industrial LCD monitor equipped with 10.4-inch 230 nits brightness SVGA LCD display and supports multi-signal interfaces including DVI-D, VGA, S-Video, and video. Featuring NEMA 4/12 & IP65 compliant front bezel, screw-type adaptor plug design, and 12/24V DC-In means it is fit for all kinds of industrial environments. Moreover, the P6100 supports panel mount, wall mount or VESA FPMPMI (Video Electronics Standards Association Flat Panel Monitor Physical Mounting Interface) mounting. With the compact mechanism design, users can enjoy free from space constraint. This compact size industrial-grade flat panel monitor is ideal for varied industrial or commercial projects, such as transportation, POI, HMI, and even rugged environments.

Specifications

Front Bezel	NEMA 4/12 (IP65)-compliant, metal front bezel	
Mounting	Panel mount, wall mount or VESA arm FPMPMI mounting (video electronics standards association flat panel monitor physical mounting interface)	
LCD Panel	Display Type	10.4" SVGA TFT LCD
	Max. Resolution	800 x 600
	Max. Colors	16.2M/262k
	Active Area (mm)	211.2 x 158.4
	Pixel Pitch (mm)	0.264 x 0.264
	Response Time	35ms
	Backlight	LED
	Backlight MTBF	30,000 hrs
	Viewing Angle(H/V)	160°/130°
	Contrast Ratio	500 (TYP)
Brightness (cd/m ²)	230 nits	
Display Control	OSD (on screen display)	
Display Mode	VGA 640 x 480 (60/72Hz)	
	SVGA 800 x 600 (60/72Hz)	
Input Signal	VGA Video: R.G.B Analog 0.7v Peak-to-Peak	
	DVI (Only for DVI-D)	
	Touchscreen: Serial RS-232 or USB interface	
	Video (optional)	
	S-video (optional)	

Specifications

I/O Connectors	1 x RS-232 or USB touchscreen version 1 x VGA input 1 x DVI (Only for DVI-D) 1 x Screw-type DC power input 1 x RCA for video (optional) 1 x S-video for video (optional)	
Power Adapter	Screw-type external AC/DC power adapter	
Power Consumption	9 W	
Touchscreen	Thickness	Resistive: 2.2 mm
	Light Transmission	Resistive: 80%
	Power Consumption	Resistive: +5V @ 100mA
	Touch Life	Resistive: 35million touches
Controller interface	RS-232 or USB	
	D-type 9-pin male connector or USB connector	
Dimensions	294.2 mm (11.58") (W) x 46.6 mm (1.83") (D) x 231.2 mm (9.1") (H)	
Packing Dimensions	380 mm (14.96") (W) x 190 mm (7.48") (D) x 430 mm (16.93") (H)	
Weight (net/gross)	2.6 kg (5.73 lb)/5.1 kg (11.24 lb)	
Environment	Operating temperature: -10°C ~ +60°C (+14°F ~ +140°F) Storage temperature: -30°C ~ +80°C (-22°F ~ +176°F) Relative humidity: 20%~90% @ 40°C, non-condensing	
Certificate	CE	

Ordering Information

P6100		
AC Power	Panel Mount Monitor	
	Resistive	P6100PR-AC-RS-V3-RC-US-EU
	Resistive (USB)	P6100PR-AC-U-V3-RC-US-EU
	Glass	P6100PG-AC-V3-RC-US-EU
24VDC Power	Panel Mount Monitor	
	Resistive	P6100PR-24VDC-RS-V3-RC
	Resistive (USB)	P6100PR-24VDC-U-V3-RC
	Glass	P6100PG-24VDC-V3-RC

P6100L		
AC Power	Panel Mount Monitor	
	Resistive (RS-232)	P6100LPR-AC-RS-V3-RC-US-EU
	Resistive (USB)	P6100LPR-AC-U-V3-RC-US-EU
	Glass	P6100LPG-AC-V3-RC-US-EU
24VDC Power	Panel Mount Monitor	
	Resistive	P6100LPR-24V-DC-RS-V3-RC
	Resistive (USB)	P6100LPR-24V-DC-U-V3-RC
	Glass	P6100LPG-24V-DC-V3-RC

* Specification and certifications are based on options and may vary.

Optional Accessories

ARM-VM-101	VESA ARM (clamp type)
ARM-VM-105	VESA ARM (wall mount type)
Wall mounting & desktop stand	



▲ Stand kit



▲ Various mounting ways:
panel/wall/VESA



▲ Phoenix-type power input

Dimensions

