

P61010 NEW

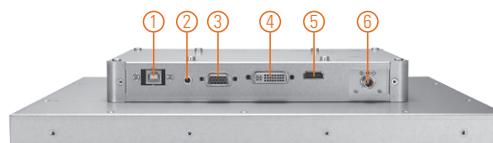
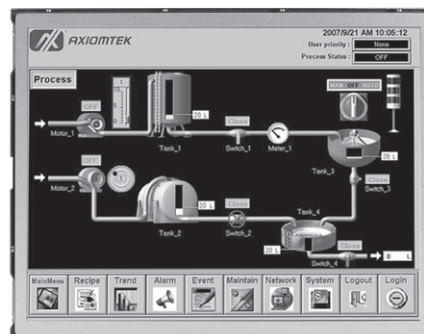
10.4" XGA TFT Industrial Open Frame Monitor

Features

- 10.4" XGA TFT LED backlight LCD
- Supports open frame mount, wall mount and VESA arm
- Resistive touchscreen
- Full range screw-type (locked) AC-in or 12V/24V DC-in (option)
- DVI-D, VGA and HDMI with multi-signal inputs



▲ Side view



- | | |
|-------------|----------|
| 1. T/S port | 5. HDMI |
| 2. Line-in | 6. Power |
| 3. VGA | |
| 4. DVI-D | |

Introduction

The P61010 is an ultra slim industrial open frame monitor, which adopts 10.4-inch 350 nits XGA LED backlight LCD display and supports multi-signal interfaces including DVI, VGA and HDMI. 12/24V DC-in means it is fit for all kinds of industrial environments. Moreover, the P6101 supports open frame mount, wall mount, rack mount or VESA FPM/PMI mounting. With the compact mechanism design, users can enjoy free from space constraint. It is especially suitable for POI/POS, excellent HMI and all kinds of heavy-duty industrial fields.

Specifications

Front Bezel	Open frame monitor	
Mounting	Open frame mount, wall mount and VESA arm	
LCD Panel	Display	10.4" XGA TFT LCD
	Max. Resolution	1024 x 768
	Max. Colors	16.7 M
	Active Area (mm)	211.2 x 158.4
	Pixel Pitch (mm)	0.2063 x 0.2063
	Response Time	16ms
	Backlight	LED backlight
	Backlight MTBF	30,000 hrs
	Viewing Angle (H/V)	150°/150°
	Contrast Ratio	900 (TYP.)
	Brightness (cd/m ²)	350 nits
Display Control	OSD (on screen display)	
Display Mode	VGA 640 x 350 (70Hz), VGA 640 x 480 (60/72/75Hz), VGA 720 x 400 (70Hz), SVGA 800 x 600 (60/72/75Hz), XGA 1024 x 768 (60/72/75Hz)	

Specifications

Input Signal	DVI-D VGA HDMI Touchscreen: Serial RS-232 or USB interface
I/O Connectors	1 x RS-232 or USB for touchscreen version 1 x DVI-D 1 x VGA 1 x HDMI 1 x Screw-type DC power input
Power Adapter	Screw-type external AC/DC power adapter
Power Consumption	TBD
Touchscreen	Thickness Resistive: 3.2 mm
	Light Transmission Resistive: 80%
	Power Consumption Resistive: +5V @ 100mA
	Touch Life Resistive: 35 million touches Controller interface: RS-232 D-type 9-pin male connector or USB
Dimensions	246.3 mm (9.7") (W) x 44.9 mm (1.77") (D) x 192.3 mm (7.57") (H)
Packing Dimensions	362 mm (14.25") (W) x 165 mm (6.5") (D) x 397 mm (15.63") (H)
Weight (net/gross)	TBD
Environment	Operating temperature: -10°C ~ +55°C (+14°F ~ +131°F) Relative humidity: 20% ~ 90% @ +40°C, non-condensing
Packing List	1 x VGA cable 1 x RS-232 or USB cable for touchscreen (for touch version) 1 x Audio cable 1 x EU/US power cord (for AC version)
Certificate	CE

Ordering Information

AC Power	Resistive (RS-232)	P61010R-AC-RS-US-EU
	Resistive (USB)	P61010R-AC-U-US-EU
	Non-touch	P61010N-AC-US-EU
12V/24VDC Power	Resistive (RS-232)	P61010R-DC-RS
	Resistive (USB)	P61010R-DC-U
	Non-touch	P61010N-DC

Optional Accessories

5946L203800E	HDMI cable
5946L1713400E	DVI cable
82231770050E	Wall mount kit
E226171106	Desktop stand

Dimensions

