

P61210

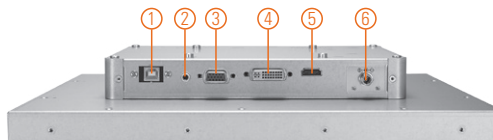
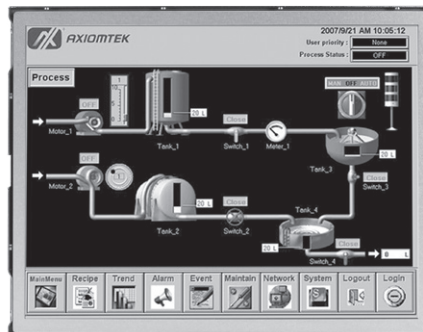
12.1" XGA TFT Industrial Open Frame Monitor

Features

- 12.1" XGA TFT LED backlight LCD
- Supports open frame mount, wall mount and VESA arm
- Full range screw-type (locked) AC-in or 24V DC-in (option)
- HDMI, DIV-D and VGA with multi-signal inputs



▲ Side view



1. RS232 or USB for touch
2. Audio (Line-in)
3. VGA
4. DVI-D
5. HDMI
6. Power input Terminal block or Screw type

Introduction

The P61210 is an ultra slim industrial open frame monitor, which adopts 12.1-inch 500 nits XGA LED backlight LCD display and supports multi-signal interfaces including DVI, VGA and HDMI. Featuring the screw-type adapter plug, the monitor is deal for all kinds of industrial environments. Moreover, the P61210 supports open frame, wall mount or VESA FPMPMI mounting. With the compact mechanism design, users can enjoy free from space constraint. It is especially suitable for POI/POS, excellent HMI and all kinds of heavy-duty industrial fields.

Specifications

| | | |
|---------------------------------|--|-------------------|
| Front Bezel | Open frame monitor | |
| Mounting | Open frame mount, wall mount and VESA arm | |
| LCD Panel | Display | 12.1" XGA TFT LCD |
| | Max. Resolution | 1024 x 768 |
| | Max. Colors | 16.2 M |
| | Active Area (mm) | 245.76 x 184.32 |
| | Pixel Pitch (mm) | 0.24 x 0.24 |
| | Response Time | 16ms |
| | Backlight | LED backlight |
| | Backlight MTBF | 30,000 hrs |
| | Viewing Angle (H/V) | 160°/140° |
| | Contrast Ratio | 700 (TYP.) |
| Brightness (cd/m ²) | 500 nits | |
| Display Control | OSD (on screen display) | |
| Display Mode | VGA 640 x 350 (70Hz), VGA 640 x 480 (60/72/75Hz), VGA 720 x 400 (70Hz), SVGA 800 x 600 (60/72/75Hz), XGA 1024 x 768 (60/72/75Hz) | |

Specifications

| | |
|--------------------|---|
| Input Signal | DVI-D VGA HDMI Touchscreen: Serial RS-232 or USB interface |
| I/O Connectors | 1 x RS-232 or USB for touchscreen version 1 x Audio (Line in) 1 x VGA 1 x DVI-D 1 x HDMI 1 x Power input with Terminal block (DC Version) or Screw type connector(AC version) |
| Audio | 2 x Speaker |
| Power Adapter | DC version: 24VDC AC version: 100 - 240VAC-DC, 36W power adapter |
| Power Consumption | 15 W |
| Touchscreen | Thickness Resistive: 3.2 mm Light Transmission Resistive: 80% Power Consumption Resistive: +5V @ 100mA Touch Life Resistive: 35 million touches Controller interface: RS-232 D-type 9-pin male connector or USB |
| Dimensions | 270.5 mm (10.56") (W) x 52.9 mm (2.08") (H) x 218.3 mm (8.59") (D) |
| Packing Dimensions | 490 mm (19.29") (W) x 166 mm (6.54") (19.29") (H) x 502 mm (19.76") (D) |
| Weight (net/gross) | TBD |
| Environment | Operating temperature: 0°C ~ +50°C (+32°F ~ +122°F) Relative humidity: 20% ~ 90% @ +40°C, non-condensing |
| Packing List | 1 x VGA cable 1 x RS-232 or USB cable for touchscreen (for touch version) 1 x Audio cable 1 x EU/US power cord (for AC version) |
| Certificate | CE |

Ordering Information

| | | |
|----------|-----------|------------------|
| AC Power | Non-touch | P61210N-AC-US-EU |
|----------|-----------|------------------|

Note: Other configuration by request

Optional Accessories

| | |
|--------------|----------------|
| 5946L203800E | HDMI cable |
| 59461713400E | DVI cable |
| 82231770050E | Wall mount kit |
| E226171119 | Desktop stand |

Dimensions

