

P61510

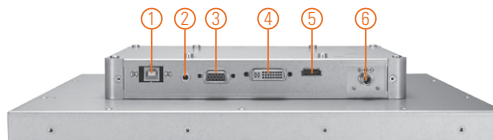
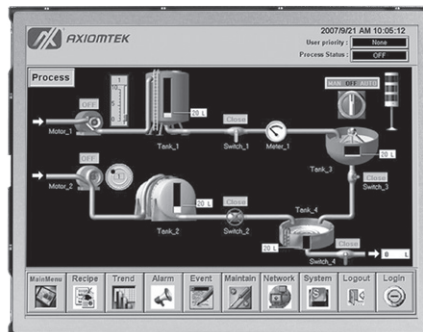
15" XGA TFT Industrial Open Frame Monitor

Features

- 15" XGA TFT LED backlight LCD
- 420 nits high brightness
- Full range screw-type (locked) AC-in or 12V/24V DC-in (optional)
- HDMI, DIV-D and VGA with multi-signal inputs
- Built-in speakers



▲ Side view



1. RS232 or USB for touch
2. Audio (Line-in)
3. VGA
4. DVI-D
5. HDMI
6. Power input Terminal block or Screw type

Introduction

The P61510 is an ultra slim industrial open frame monitor, which adopts 15-inch 420 nits XGA LED backlight LCD display and supports multi-signal interfaces including DVI, VGA and HDMI. Featuring, screw-type adaptor plug design, and 12/24V DC-in means it is fit for all kinds of industrial environments. With the compact mechanism design, users can enjoy free from space constraint. It is especially suitable for POI/POS, excellent HMI and all kinds of heavy-duty industrial fields.

Specifications

Front Bezel	Open frame monitor	
Mounting	Open frame mount, wall mount and VESA arm	
LCD Panel	Display	15" XGA TFT LCD
	Max. Resolution	1024 x 768
	Max. Colors	16.2 M
	Active Area (mm)	304.128 x 228.096
	Pixel Pitch (mm)	0.297 x 0.297
	Response Time	16ms
	Backlight	LED backlight
	Backlight MTBF	30,000 hrs
	Viewing Angle (H/V)	160°/160°
	Contrast Ratio	800 (TYP.)
Brightness (cd/m ²)	420 nits	
Display Control	OSD (on screen display)	
Display Mode	VGA 640 x 350 (70Hz), VGA 640 x 480 (60/72/75Hz), VGA 720 x 400 (70Hz), SVGA 800 x 600 (60/72/75Hz), XGA 1024 x 768 (60/72/75Hz)	
Input Signal	DVI-D VGA HDMI Touchscreen: Serial RS-232 or USB interface	

Specifications

I/O Connectors	1 x RS-232 or USB for touchscreen version 1 x Audio (Line in) 1 x VGA 1 x DVI-D 1 x HDMI 1 x Power input with Terminal block (DC Version) or Screw type connector (AC version)
Power Supply	DC version: 24VDC AC version: 100 - 240VAC-DC, 36W power adapter
Power Consumption	15 W
Touchscreen	5-wire resistive touch (by request)
Dimensions	335 mm (13.19") (W) x 58 mm (2.28") (D) x 261.5 mm (10.29") (H)
Packing Dimensions	476 mm (18.74") (W) x 85 mm (3.34") (D) x 152 mm (5.98") (H)
Weight (net/gross)	3.08 kg (6.79 lb)/4.58 kg (10.1 lb)
Environment	Operating temperature: 0°C ~ +50°C (+32°F ~ +122°F) Relative humidity: 20% ~ 90% @ +40°C, non-condensing
Packing List	1 x VGA cable 1 x RS-232 or USB cable for touchscreen (for touch version) 1 x Audio cable 1 x EU/US power cord (for AC version)
Certificate	CE

Ordering Information

AC Power	Non-touch	P61510N-AC-US-EU
----------	-----------	------------------

Note: Other configuration by request

Optional Accessories

5946L203800E	HDMI cable
59461713400E	DVI cable
82231770050E	Wall mount kit
E226171119	Desktop stand

Dimensions

