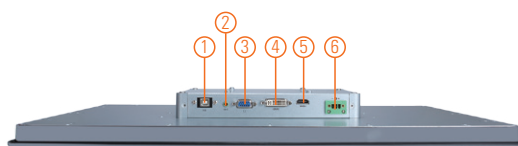
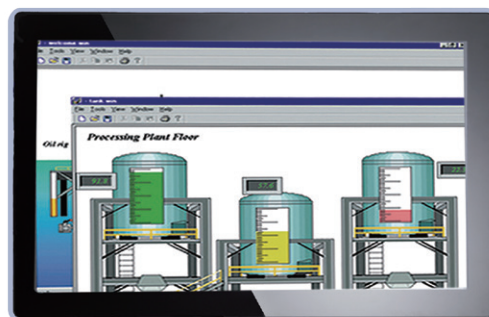
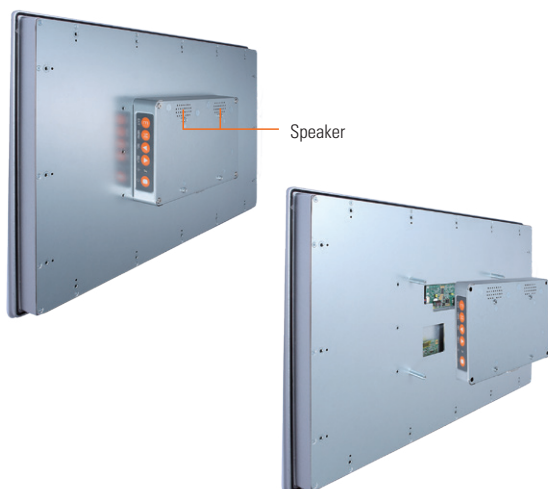


# P6157W-V2

15.6" WXGA TFT Widescreen Industrial LCD Monitor

## Features

- 15.6" WXGA TFT 400 nits LCD with projective capacitive multi-touch or resistive touch
- NEMA 4/12 (IP65) compliant flat panel monitor
- Supports panel mount, wall mount and VESA mount
- Full range screw-type (locked) AC-in or 24V DC-in (optional)
- VGA, HDMI and DVI with multi-signal inputs



1. USB for touch
2. Audio (Line in)
3. VGA
4. DVI-D
5. HDMI
6. Power input Terminal block or Screw type

## Introduction

The P6157W-V2 is a slim-type industrial LCD monitor with flat front bezel design, which adopts 15.6-inch 300 nits full HD LCD display and supports multi-signal interfaces including DVI, VGA and HDMI. Featuring IP65 (NEMA 4)-rated front bezel, screw-type adaptor plug design, and 12/24V DC-in, the 15.6-inch P6157W-V2 is designed to fit for all kinds of industrial environments. Moreover, the P6157W-V2 supports panel mount, wall mount or VESA FPMPMI (Video Electronics Standards Association Flat Panel Monitor Physical Mounting Interface) mounting. With the compact mechanism design, the P6157W-V2 can be deployed easily in any space-limited place. It is especially suitable for POI/POS, HMI and all kinds of heavy-duty industrial fields.

## Specifications

Front Bezel	NEMA 4/12 (IP65)-compliant, flat front bezel	
Mounting	Panel mount, wall mount and VESA arm FPMPMI mounting (video electronics standards association Flat Panel monitor physical mounting interface)	
LCD Panel	Display	15.6" WXGA TFT LCD
	Max. Resolution	1366 x 768
	Max. Colors	16.7 M
	Active Area (mm)	344.232 x 193.536
	Pixel Pitch (mm)	0.252 x 0.252
	Response Time	8 ms
	Backlight	LED
	Backlight MTBF	50,000 hrs
	Viewing Angle (H/V)	170°/160°
	Contrast Ratio	500 (TYP.)
Brightness (cd/m <sup>2</sup> )	400 nits	
Display Control	OSD (on screen display)	
Display Mode	VGA 640 x 350 (70 Hz), VGA 640 x 480 (60/72/75 Hz), VGA 720 x 400 (70 Hz), SVGA 800 x 600 (60/72/75 Hz), XGA 1024 x 768 (60/72/75 Hz), WXGA 1366 x 768 (60 Hz)	
Input Signal	VGA HDMI DVI-D Touchscreen: USB interface	

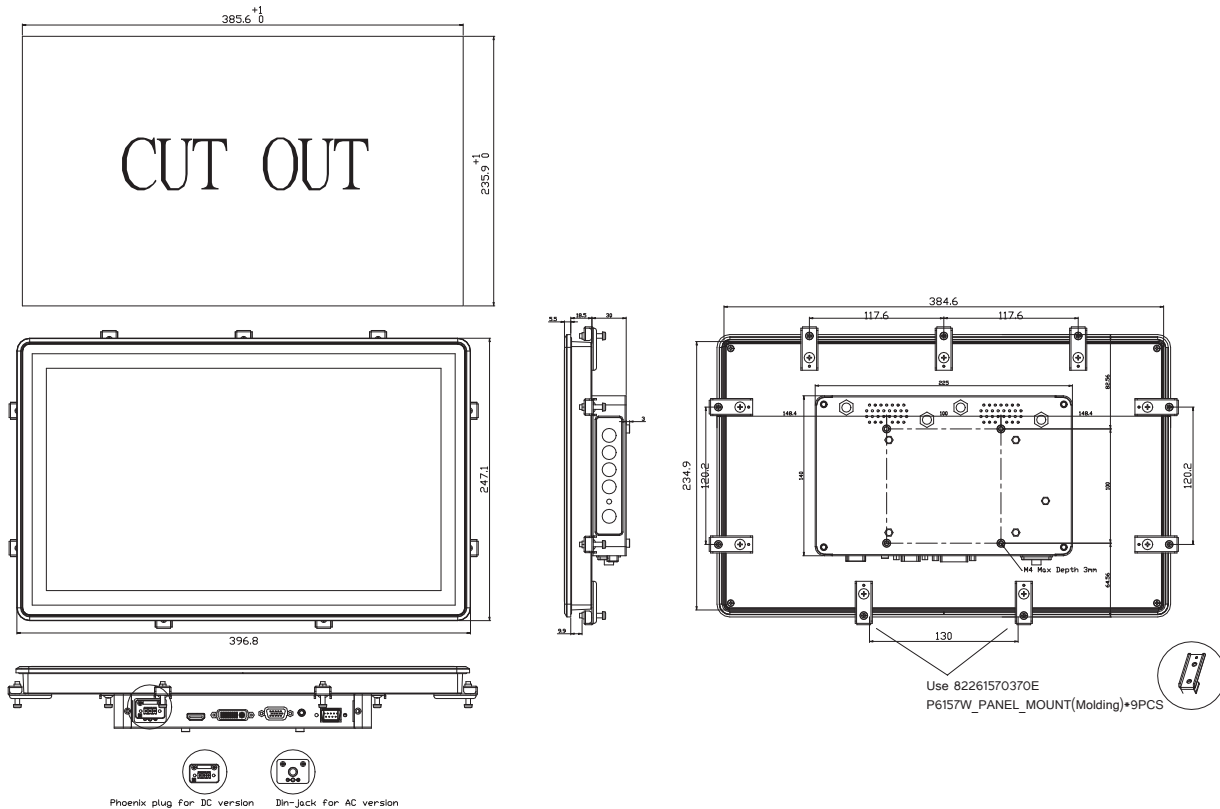
## Specifications

I/O Connectors	1 x USB for touch 1 x Audio (Line-in) 1 x VGA 1 x DVI-D 1 x HDMI 1 x DVI 1 x Power input with Terminal block(DC Version) or Screw type connector(AC version)
Audio	2 x Speaker
Power Supply	DC version: 24VDC AC version: 100 - 240VAC-DC, 36W power adapter
Power Consumption	19W
Touchscreen	Projective capacitive multi-touch or 5-wire resistive touch
Dimensions	396.8mm (15.62") (W) x 247.1mm (9.73") (D) x 54mm (2.13") (H)
Packing Dimensions	505 mm (19.88") (W) x 166 mm (6.53") (D) x 440 mm (17.32") (H)
Weight (net/gross)	3.9 kg (8.598 lb)/5.88 kg (12.963 lb)
Operating temperature	0°C to +50°C (+32°F to +122°F)
Relative humidity	20% to 90% @ +40°C, non-condensing
Certifications	CE

## Packing List

- 1 x P6157W-V2 unit
- 1 x VGA cable
- 1 x USB cable (for resistive/capacitive touch screen only)
- 1 x Audio cable
- 1 x Adapter (AC version only)
- 1 x Power cord (AC version only)
- 1 x 3-PIN Terminal block (DC version only)

## Dimensions



## Ordering Information

P6157W-V2	
P6157WPR-AC-U-US-V2 (P/N: E226157126)	15.6" Industrial Resistive Touch Screen, AC Version
P6157WPC-AC-U-US-EU-V2 (P/N: E226157119)	15.6" Industrial Monitor with Capacitive Touch Screen, AC Version
P6157WPR-24VDC-U-V2 (P/N: E226157125)	15.6" Industrial Monitor with Resistive Touch Screen, 24VDC Version
P6157WPC-24VDC-U-V2 (P/N: E226157121)	15.6" Industrial Monitor with Capacitive Touch Screen, 24VDC Version

- \* Other configuration by request
- \* Specification and certifications may vary based on different requirements

## Optional Accessories

5946L203800E	HDMI cable
5946L1713400E	DVI-D cable
881261570A0E	Panel mount kit
881231770A0E	Wall mount kit
E221177116	Desktop stand for 15.6" to 21.5"