

# P61910

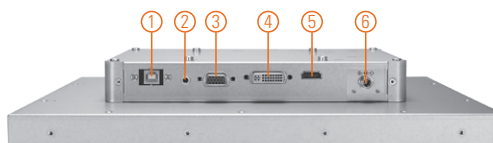
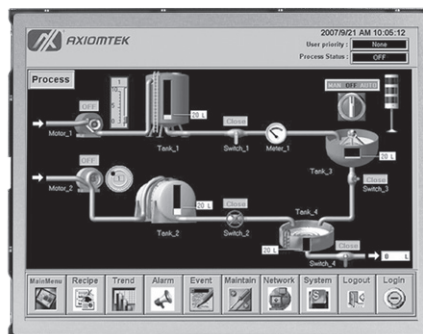
19" SXGA TFT Industrial Open Frame Monitor

## Features

- 19" SXGA TFT LED backlight LCD
- Supports open frame mount, wall mount and VESA arm
- Resistive touchscreen
- Supports 24 VDC power input
- VGA, HDMI and DVI-D with multi-signal inputs



▲ Side view



1. T/S port
2. Line-in
3. VGA
4. DVI-D
5. HDMI
6. Power

## Introduction

The P61910 is an ultra slim industrial open frame monitor, which adopts 19-inch 250 nits SXGA LED backlight LCD display and supports multi-signal interfaces including DVI, VGA and HDMI. Moreover, the P61910 supports open frame mount, wall mount or VESA FPMPI mounting. With the compact mechanism design, users can enjoy free from space constraint. It is especially suitable for POI/POS, excellent HMI and all kinds of heavy-duty industrial fields.

## Specifications

Front Bezel	Open frame monitor	
Mounting	Open frame mount, wall mount and VESA arm	
LCD Panel	Display	19" SXGA TFT LCD
	Max. Resolution	1280 x 1024
	Max. Colors	16.7 M
	Active Area (mm)	376.32 x 301.06
	Pixel Pitch (mm)	0.294 x 0.294
	Response Time	5ms
	Backlight	LED backlight
	Backlight MTBF	50,000 hrs
	Viewing Angle (H/V)	170°/160°
	Contrast Ratio	1000 (TYP.)
Brightness (cd/m <sup>2</sup> )	250 nits	
Display Control	OSD (on screen display)	
Display Mode	VGA 640 x 350 (70Hz), VGA 640 x 480 (60/72/75Hz), VGA 720 x 400 (70Hz), SVGA 800 x 600 (60/72/75Hz), XGA 1024 x 768 (60/72/75Hz), SXGA 1280 x 1024 (60/72/75Hz)	

