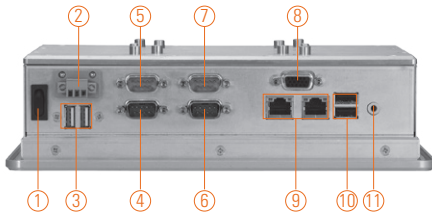
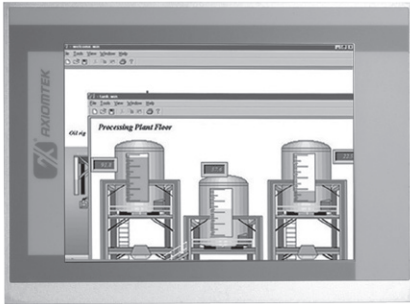


GOT3846T-832

8.4" SVGA TFT Fanless Touch Panel
Computer with Intel® Atom™ Processor
(-20°C +55°C)



- | | |
|---------------------------|----------------------|
| 1. Power switch | 6. COM 2 (RS-232) |
| 2. DC power input | 7. COM 4 (RS-232) |
| 3. USB 2.0 x 2 | 8. VGA |
| 4. COM 1 (RS-232/422/485) | 9. Ethernet x 2 |
| 5. COM 3 (RS-232) | 10. USB 2.0 x 2 |
| | 11. Audio (Line-out) |

Features

- 8.4" SVGA (800 x 600) color TFT LCD display
- Fanless design with Intel® Atom™ processor N2600 1.6 GHz
- Supports wide temperature range of -20°C ~ +55°C
- Aluminum front bezel & chassis
- Supports WLAN module & external antenna
- Supports 2 Gigabit LAN, 4 USB 2.0 & 4 COM ports
- Supports panel mount, wall mount, VESA arm, desktop stand (optional)



▲ Side view



▲ Rear view



Introduction

The GOT3846T-832 adopts an 8.4-inch SVGA 450 nits TFT LCD and supports Intel® Atom™ processor. By supporting a wide range operating temperature from -20°C to +55°C, it can be used in harsh environment. The rugged 8.4" industrial panel PC supports low power Intel® Atom™ processor N2600. The fanless HMI can work under 1.0 G (10 ~ 500Hz, random for 2.5" HDD) in operation mode with a patent of anti-vibration design. It also provides one PCIe mini card slot for 3G, wireless network connectivity. The 8.4" fanless touch panel computer is suitable for transportation, heavy-duty industry, smart factory automation, and oil pipe monitoring systems.

Wide Temperature Range Support (-20°C to +55°C)

The Intel® Atom™-based GOT3846T-832 applies unique extended temperature technology with wide temperature range support as well as fanless operation. It also has a compact design for harsh environment.

WLAN Antenna Support (optional)

The 8.4" SVGA high brightness IP65 industrial panel PC, GOT3846T-832, provides one PCIe mini card slot and WLAN/3G antennas for wireless network connectivity.

Specifications

Front Bezel	IP65, NEMA 4 rugged protection, aluminum front bezel		
LCD Panel	Display Type	8.4" SVGA TFT LCD	
	Brightness (cd/m ²)	450 nits	
	Resolution	800 x 600	
Main System	CPU	Intel® Atom™ processor N2600 2C @1.6 GHz	
	Chipset	Intel® NM10 Express	
	System Memory	1 x 204-pin DDR3-800/1066 SO-DIMM max. up to 2 GB	
	BIOS	AMI UEFI BIOS	
	Storage	1 x 2.5" SATA HDD	
		1 x CompactFlash™ (optional)	
	Watchdog Timer	255 levels, 0-255 sec.	
	Onboard Graphics	Integrated Intel® GFX	



Specifications

I/O Connector	3 x RS-232 (COM 2/3/4) 1 x RS-232/422/485 (COM 1) 1 x VGA 1 x Audio (Line-out) 4 x USB 2.0 2 x 10/100/1000Mbps Ethernet
Expansion Interface	1 x PCIe Mini Card
Touchscreen	Resistive type
Power Supply	10-30VDC with power protection
Dimensions	248 mm (9.76") (W) x 58.3 mm (2.29") (D) x 183 mm (7.2") (H)
Packing Dimensions	390 mm (15.35") (W) x 190 mm (7.48") (D) x 430 mm (16.92") (H)
Weight (net/gross)	3.4 kg (7.49 lb)/5.8 kg (12.78 lb)
Environment	Operating temperature: -20°C ~ +55°C (-4°F ~ +131°F) (with W.T. DRAM/HDD/CF) Storage Temperature: -30°C ~ +80°C (-22°F ~ +176°F) Relative humidity: 10% ~ 95% @ 40°C; non-condensing Operation vibration: 1G, 5 ~ 500Hz, random for 2.5" HDD 2G, 5 ~ 500Hz, random for CompactFlash™
Certificate	CE

* W.T.: Wide Temperature. All W.T. supported products have to be sorted by Axiomtek.

Ordering Information

GOT3846T-832	8.4" SVGA TFT fanless touch panel computer with Intel® Atom™ N2600 1.6 GHz dual core processor, resistive touch screen and 10-30VDC terminal block connector
--------------	--

* Specification and certifications are based on options and may vary.

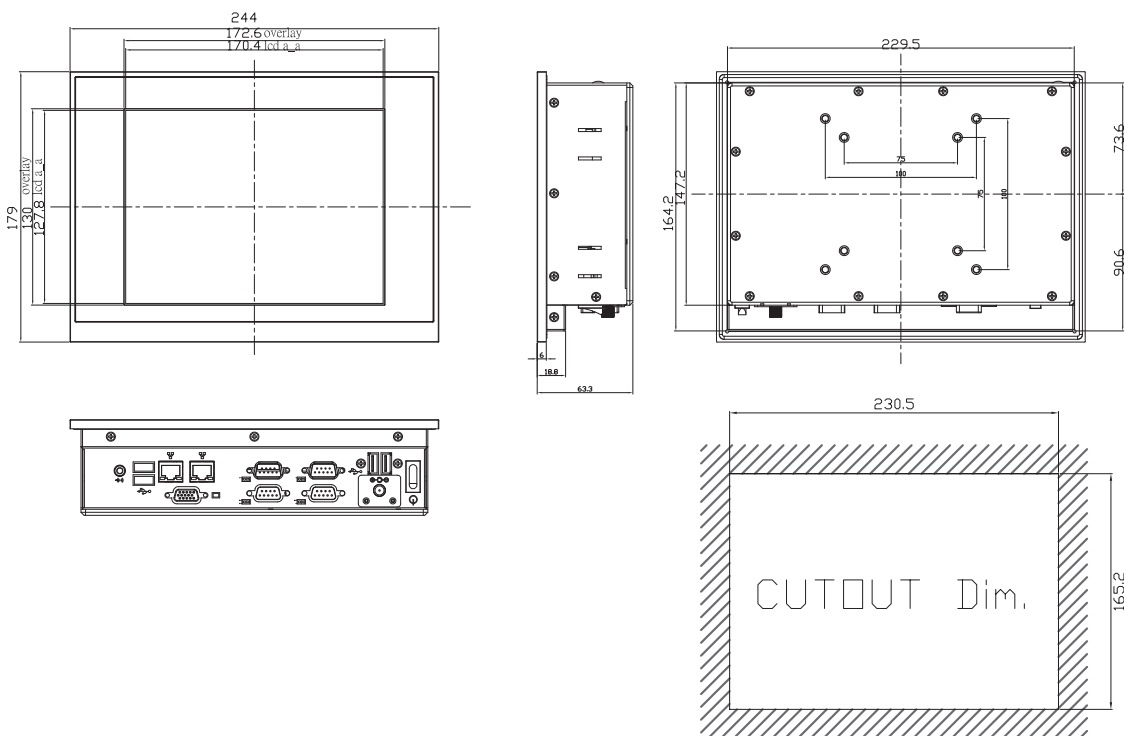
Optional EOS Installation

WES
Windows® Embedded Standard 7 (32-bit)

Optional OS Installation

Windows® XP
Windows® 7 (32-bit)

Dimensions



Overview

Fanless Touch Panel Computers

2
Heavy-duty Fanless Touch Panel Computers

Industrial Touch Panel Computers

Industrial Touch panel Monitors

Infotainment Touch Panel Computers

Healthcare & Medical Solutions

Open Frame Panel Computers

Accessories

