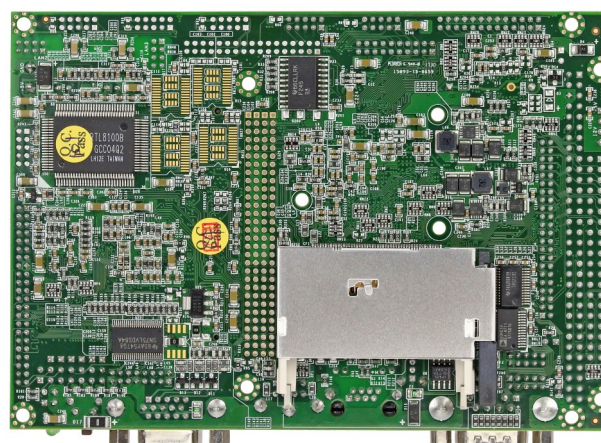
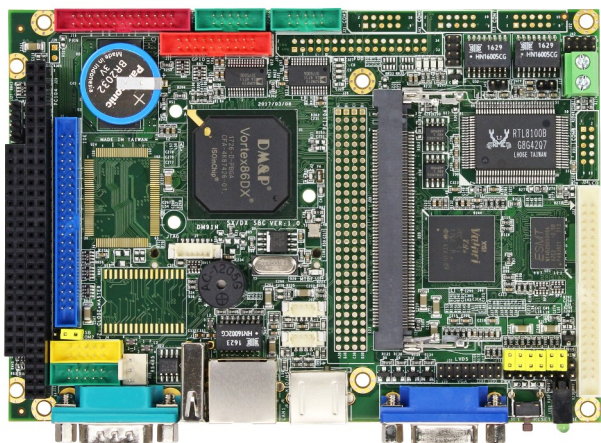


VDX-6326RD-NF



Specifications

CPU	DM&P SoC CPU Vortex86DX – 800MHz			
RAM	256/512MB DDR2 Onboard			
BIOS	AMI BIOS			
Bus	PC/104 standard compliant		Mini PCI standard compliant	
Display	XGI Volari Z9s Chipset with VGA, TFT-LCD, and 18-bit LVDS Flat Panel Interface Support			
	Onboard 32MB VGA Memoery			
	VGA: Maximum resolution up to 1280 x 1024 @ 60Hz LVDS/TTL-LCD: Maximum resolution up to 1024 x 768 @ 60Hz			
LAN	Integrated 10/100Mbps Ethernet x1	Realtek 8100B 0/100Mbps Ethernet x2		
Disk Support	IDE DoM	Compact Flash	Onboard 4MB SPI Flash Disk	
SRAM Support	512KB (Optional)			
I/O Interface	RS232 x3 16-bit GPIO x1	RS232/422/485 x1 Audio	USB (Ver. 2.0)) x3	Parallel x1
Connectors	2.54mm 4-pin pin header for +12V, -12V, -5V, GND x1	2.54mm 2-pin pin header for Reset x1	2.54 3-pin pin header for RS485 x1	
	2.54mm 104-pin PC/104 connector x1	2.0mm 8-pin pin header for Ethernet x1	2.0mm 16-pin pin header for LVDS x1	
Power Requirement	2.0mm 44-pin box header for IDE x1	2.0mm 44-pin box header for LCD x1	2.0mm 26-pin box header for Parallel x1	
	2.0mm 20-pin box header for 16-bit GPIO x1	2.0mm 10-pin box header for RS232 x3	2.0mm 10-pin box header for USB x1	
	1.25mm 4-pin wafer for Line-in/MIC-out x2	0.8mm 124-pin Mini PCI connector x1	9-pin D-Sub male connector for RS232 x1	
	15-pin D-Sub female connector for VGA x1	RJ45 connector for Ethernet x1	USB connector x1	
	Mini DIN connector for Keyboard/Mouse x1	Type I/II Compact Flash Slot x1		
	DC +5V @ 880mA			
Operating Temperature	-20°C - +70°C -40°C - +85°C (Optional)			
Dimension	102 x 146mm			
Weight	150g			
O/S Supporter	Windows Embedded 2009	Windows Embedded CE6.0	Windows Emnedded CE5.0	Free BSD
	Linux	DOS	POS Readu (WePOS)	VxWorks

Ordering Information

PART NO.	CPU (MHz)	DRAM (DDR2)	Storage	Display	LAN	RS232/RS485	USB	Parallel	16-bit GPIO	PC/104	Mini PCI	Audio
VDX-6326RD-NF	800MHz	256MB	IDE 4MB SPI CF	VGA LVDS TFT-LCD	3	3/1	3	1	1	1	1	MIC-in Line-out
VDX-6326RD-NF-512	800MHz	512MB	IDE 4MB SPI CF	VGA LVDS TFT-LCD	3	3/1	3	1	1	1	1	MIC-in Line-out

